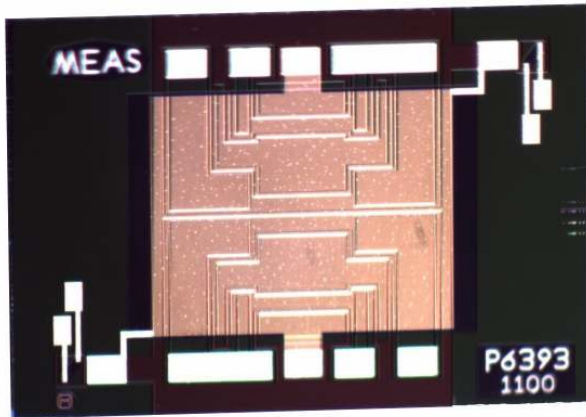


P6393 Pressure Sensor Die



- 2 - 500psi (0.1 – 35Bar)
- Both Gage and Absolute versions
- Open Bridge Configuration
- RoHS-compatible & Pb-free

DESCRIPTION

The P6393 die is a piezoresistive pressure sensor designed for mid pressure applications. This die is available in 0-2 to 0-500 psi pressure ranges in both gage and absolute configurations. The die can also be configured for backside pressure applications for the 2 and 5psi gage versions. The P6393 die sensors are offered in open bridge (two independent half bridges) configurations and include a resistor field shield tied to substrate contact for oil-filled applications.

FEATURES

- High Sensitivity
- -50°C to +150°C Temperature Range
- $\pm 0.1\%$ Linearity
- Die Size: 4.0 x 3.0 mm
- Low Cost, High Reliability

APPLICATIONS

- Air Flow Measurements
- Medical Instrumentation
- Automotive Applications
- Industrial Applications

STANDARD RANGES

Range	Backside, psig	Frontside, psig	Frontside, psia
0 to 2	•	•	
0 to 5	•	•	•
0 to 10		•	
0 to 15		•	•
0 to 30		•	•
0 to 50		•	•
0 to 100		•	•
0 to 250		•	•
0 to 500		•	•

P6393 Pressure Sensor Die

PERFORMANCE SPECIFICATIONS

Supply Voltage: 5V

Ambient Temperature: 25°C (unless otherwise specified)

PARAMETERS	MIN	TYP	MAX	UNITS	NOTES
Span	11		21	mV/V @ FS	
Span (2psi only)	4.4		8.4	mV/V @ FS	
Pressure Non Linearity	-0.1		0.1	%Span	1
Pressure Non Linearity (500psi only)	-0.25		0.25	%Span	1
Bridge Resistance (Input & Output Impedance)	4000	4800	5600	Ω	2
Temperature Coefficient Resistance (TCR)	2200	2500	2750	ppm/°C	3
Temperature Coefficient Sensitivity (TCS)	-2450	-2200	-2000	ppm/°C	3
Offset	0	3.0	6.0	mV/V	
Temperature Coefficient Offset		±1		(μV/V/°C)	3,4
Temperature Coefficient mismatch; (TCR + TCS)	0	300	550	ppm/°C	
Leakage Current			20	nA	5
Operating Voltage		5.0	12.0	V	
Operating Current		1.5	2.0	mA	
Over Pressure			5X	Rated	6
Burst Pressure	6X			Rated	6
Compensated Temperature	0		50	°C	
Operating Temperature	-50		+150	°C	
Storage Temperature	-55		+200	°C	

Notes

1. Best fit straight line.
2. 100% probed for offset and bridge resistance at 1.5mA at room temperature unless otherwise specified
3. Temperature Coefficient values over 0°C to 50°C with reference to 25°C.
4. Influenced by die attach.
5. Total Leakage current includes junction isolation and oxide at 10Vdc.
6. Topside measured value.

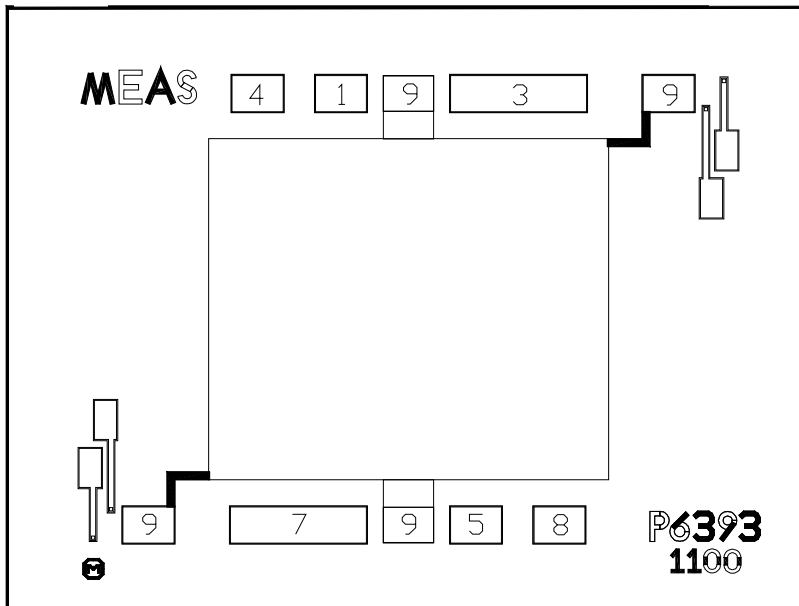
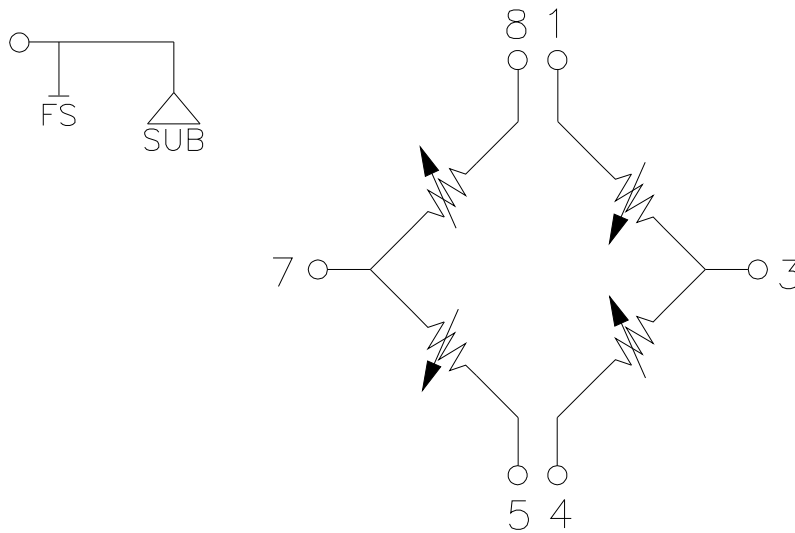
CHIP DIMENSIONS

PARAMETERS	TYP	MAX	UNITS
Die Length	3.90		mm
Die Width	2.90		mm
Die Height (with glass constraint)	1.29		mm
Pad Size	150x150		microns
Gage Hole Diameter	0.8		mm

P6393 Pressure Sensor Die

CONNECTIONS

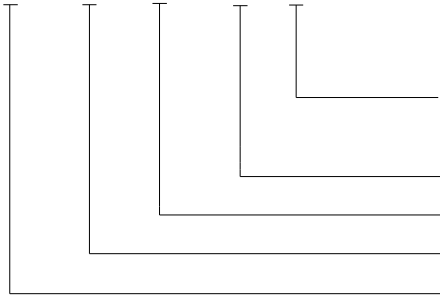
Positive output for pressure applied topside



P6393 Pressure Sensor Die

ORDERING INFORMATION

P6393G-050-30-C



Shipping Form (C = Finished Die in Chip Trays, T = Sawn Wafer on Tape
W = Probed Unsaun Wafer)

Pressure Applied (30 = Frontside, 31 = Backside)

Pressure Range

Type (G = Gage, A = Absolute)

Model

NORTH AMERICA

Measurement Specialties
45738 Northport Loop West
Fremont, CA 94538
Tel: 1-800-767-1888
Fax: 1-510-498-1578
Sales: pfg.cs.amer@meas-spec.com

EUROPE

Measurement Specialties
(Europe), Ltd.
26 Rue des Dames
78340 Les Clayes-sous-Bois, France
Tel: +33 (0) 130 79 33 00
Fax: +33 (0) 134 81 03 59
Sales: pfg.cs.emea@meas-spec.com

ASIA

Measurement Specialties
(China), Ltd.
No. 26 Langshan Road
Shenzhen High-Tech Park (North)
Nanshan District, Shenzhen 518107
China
Tel: +86 755 3330 5088
Fax: +86 755 3330 5099
Sales: pfg.cs.asia@meas-spec.com

The information in this sheet has been carefully reviewed and is believed to be accurate; however, no responsibility is assumed for inaccuracies. Furthermore, this information does not convey to the purchaser of such devices any license under the patent rights to the manufacturer. Measurement Specialties, Inc. reserves the right to make changes without further notice to any product herein. Measurement Specialties, Inc. makes no warranty, representation or guarantee regarding the suitability of its product for any particular purpose, nor does Measurement Specialties, Inc. assume any liability arising out of the application or use of any product or circuit and specifically disclaims any and all liability, including without limitation consequential or incidental damages. Typical parameters can and do vary in different applications. All operating parameters must be validated for each customer application by customer's technical experts. Measurement Specialties, Inc. does not convey any license under its patent rights nor the rights of others.